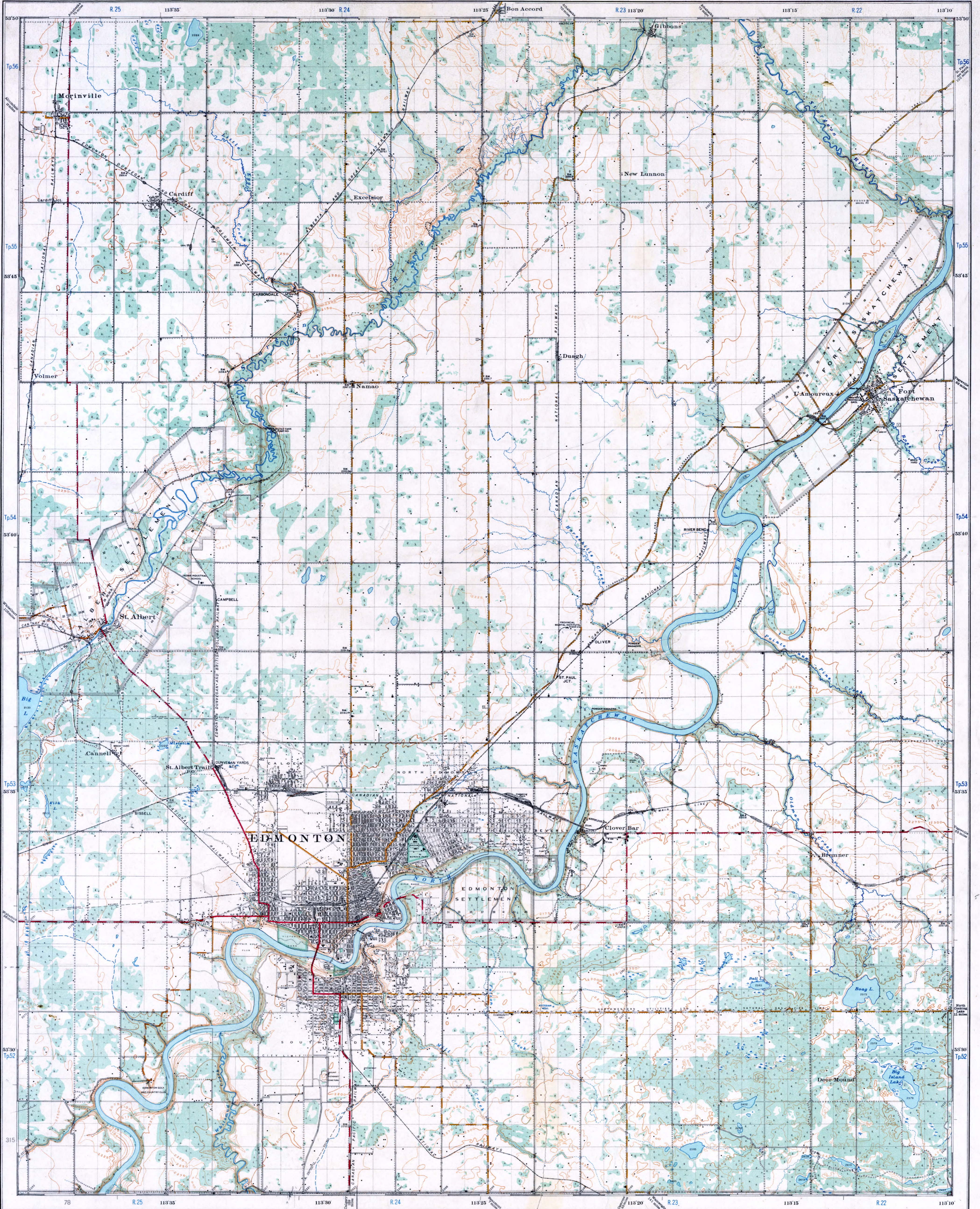


ALBERTA

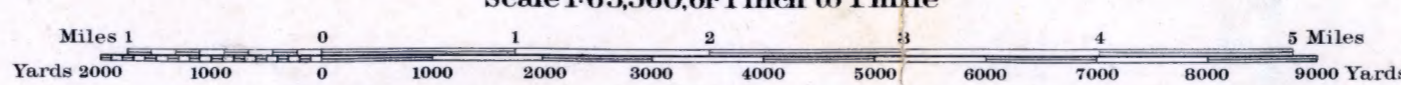


Drawn and printed at the office of the Topographical Survey of Canada, Department of the Interior, Ottawa, June 1926

Compiled from surveys by the Topographical Survey of Canada, and from aerial photographs supplied by the Royal Canadian Air Force.

EDMONTON DISTRICT

Scale 1:63,360, or 1 inch to 1 mile



Contour interval 25 feet
 Datum is mean sea level.

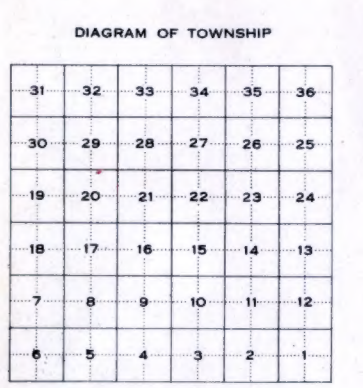
Price 25 cents
 In folder form 50 cents.

Reference

Bombing, County	Township	Clay
Railway, Double track	Station	Gravel
Single track	Abandoned	Embankment
Electric	Grade	Cutting
Road class 1, trunk road	2, secondary throughfare	3, local road well travelled
4, slightly travelled	5, foot path	
Point, Top of Bench	Telephone or Telegraph	
Electric power line	Pipe line	
Canal and Locks	Asphalt	
Ditch and Irrigation canal	Waterpore	
Mosque	Marsh	
Non-permanent levee	Alkaline flat	
Iron or arched		
Swing bridge, iron or wood		
Dam, Wood or masonry		

Reference

Culvert, Fall, Rapid	Heavy woods
Non-permanent stream	Light woods
Diaper	Quarry
Contours and Cliffs	Gravel or Sand pit
Depression contour	Blacksmith shop or garage
Elevator	Gasoline station
Building	Garage and gasoline station
School	Mine
Post office	Cometary
Telegraph office	Mill, Saw mill
Church, With spire or tower	Grid or four mill
Without	Other mill or factory
Hotel	Ben (isolated)
Height in feet	Tranquillity station
Depth in feet	Bench marks
Road allowance	Bench marks on T.S.C. monuments



Presented to the University Map Collection, The University of Alberta, in memory of Professor Leonard E. Gads one time Associate Dean of Engineering

Alberta C-25 [Archives]